

Therapeutic Landscapes: Materializing the Spaces of Care?

Myles Gould (Anagram: *Ugly Models*)
School of Geography, University of Leeds

Email: m.i.gould@leeds.ac.uk

Twitter: [@Myles_Gould_UoL](https://twitter.com/Myles_Gould_UoL)




Presentation for “Materialities of Care: Encountering Health & Illness Through Objects, Artefacts, & Architecture”

University of York, 16th September 2015

Structure

- Therapeutic Landscapes
- ‘Therapeutic’ Hospital Landscapes
- T-H-L Elements & Domains
- Conclusions & Observations

Postcode of
Harrogate as a
health resort



Promotional picture of
bottle of Harrogate Spa
Water

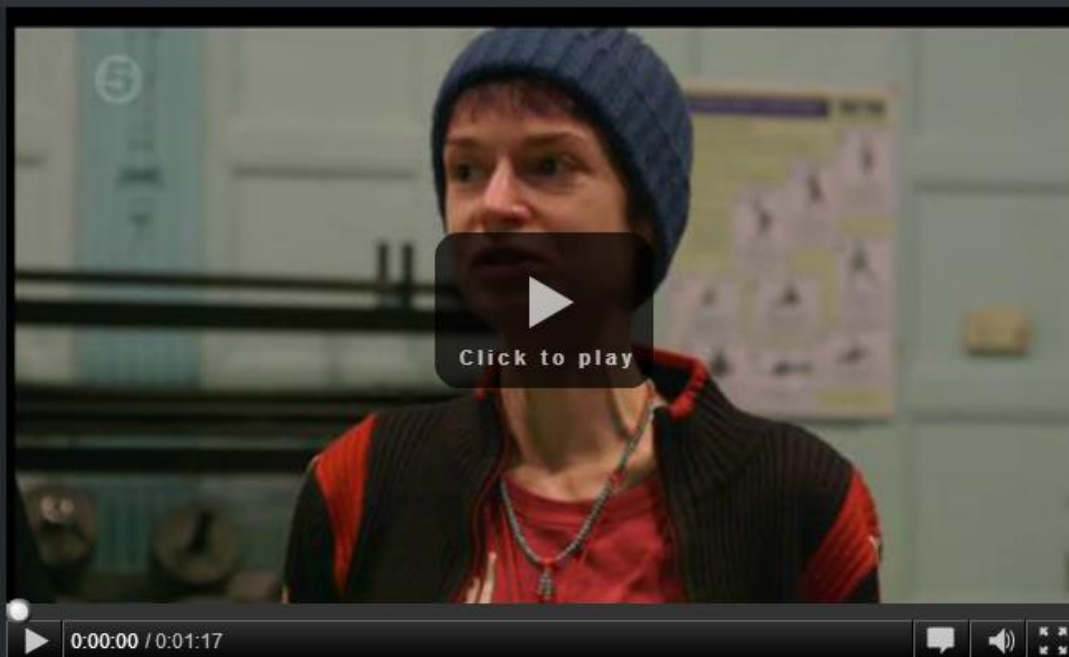
Promotional Pictures of Baths

Source: Harrogate Turkish Baths & Health Spa.

Promotional leaflet – Midland Hotel's new Spa

Clip from: *Inside Manchester's Midland Hotel*, Monday 1 Jun 2015 at 21:00

Channel 5



This recording is to be used only for non-commercial educational purposes under the terms of an [ERA](#) Licence.

Inside Manchester's Midland Hotel, [television programme, online], Prod. credit n.k., Prod. company n.k., Prod. country n.k., 21:00 1/6/2015, Channel 5, 60mins., <http://bobnational.net/record/307914> (Accessed 15/09/2015).

'Therapeutic' Hospital Landscapes (2)

Example: Newham Mental Health Hospital (Curtis *et al*, 2007)

- Patient informants helped identify themes for their wellbeing with implication for future hospital design for patient population
- respect & empowerment
- Security / surveillance Vs. freedom / openness
- territoriality, privacy, refuge & social interaction
- homeliness & contact nature
- places for expressing & reaffirming identity, autonomy & choice
- integration & sustainable communities

'Therapeutic' Hospital Landscapes: Elements & Domains

Domain	Possible elements & features	Notes
Positive/negative characteristics of health care environment	<ul style="list-style-type: none"> • facilities • accessibility • signage • spatial configuration & utility • general aesthetics • furniture and fittings • light colour and texture • sound/noise • smells • temperature, ventilation & humidity • distracting features (e.g. paintings & window views, <i>flowing water</i> , <i>vegetation</i>) • <i>dirt</i> 	<ul style="list-style-type: none"> • Generally these are physical features that are experienced by patients and staff
Positive/negative social interaction experiences	<ul style="list-style-type: none"> • interaction with health care professionals • opportunities for interaction with accompanying family / friends / <i>volunteers</i> • opportunities for interaction with other patients 	<ul style="list-style-type: none"> • Concerned with both patients/staff, patient/other, patient/patient, staff/staff encounters and experiences in social settings/contexts • Will be influenced by first domain – characteristics of health care environment
Positive/negative medical & clinical treatment experiences	<ul style="list-style-type: none"> • fear & anxiety • dignity • privacy during consultation • opportunities for happy moments & relief • access to information & information resources • clinicalness/hygiene 	
Positive/negative spaces of healing	<ul style="list-style-type: none"> • public spaces • private spaces • opportunities for peace & privacy • <i>surveillance</i> / <i>gaze</i> • opportunities or support/interaction 	<div style="background-color: #d4edda; padding: 10px; border: 1px solid #c3e6cb;"> <p><i>Source: Gould M, Malby R et al (n.d)</i></p> </div>
Positive/negative overall health experience	<ul style="list-style-type: none"> • Linkage between issues that overlap between domains 	

Therapeutic Landscapes: NHS Hospitals



Source: Author's own – Royal Liverpool University Hospital

Eye-catching multi-million pound centre set to boost cancer support in Leeds



An artist's impression of the proposed Maggie's Centre at Leeds St James's Hospital.

Source: Yorkshire Evening Post, 10/6/15.

Conclusions

- Potentially usefully in sharpening gaze (sic) & emphasis on care environments
- Critique: need to consider negative aspects of healing environments
- Careful handling
 - Transferability to other (bio)medicalised academics & professionalised practitioners/managers?
 - Challenges for applying in policy
 - Sensitive to criticism of self-indulgence
- Measurability?
 - Genuinely subjective and relational
- Potentially usefully in sharpening gaze (sic) & emphasis on care environments
- Costs/limited resources
 - Leaving to voluntary sector as 'luxuries' (sic)

References

Curtis SE et al., (2007) 'Therapeutic landscapes in hospital design: A qualitative assessment by staff & service users design of a new mental hospital inpatient unit, *Environment and Planning, C: Government and Policy* **25**, 591-610.

Gesler W M (1992) 'Therapeutic landscapes: Theory and a case study of Epidaurus, Greece', *Environment & Planning D: Society & Space* **11** , 171-189.

Myles' Extra Notes

Therapeutic Landscapes (1)

- Analysis of places that have attained enduring reputations for achieving physical, mental & spiritual healing (Gesler, 1993)
 - consider the efficacy of these landscapes
 - consideration of physical, social & symbolic spaces (Curtis et al, 2007)
 - how contribute to physical & mental wellbeing
 - may involve travel/visit/ pilgrimage
 - examples: sanctuaries classical Greece (Epidaurus); Spa towns – Bath & Harrogate; sites for religious pilgrimage – Lourdes etc

Therapeutic Landscapes (2)

- Uses ideas & concepts from:
 - cultural & social geography,
 - humanism, structuralism (social interactions & power relationships)
 - holistic health
 - Involves 'archaeology of discourse' – examine written and oral documents
- Items of physical &/or natural world with healing characteristics
 - Water: healing, purification, absolution/forgiveness
 - Plants: homoeopathic or pharmacological
 - Buildings: temples, & spas

'Therapeutic' Hospital Landscapes (1)

Example: Newham Mental Health Hospital (Curtis *et al*, 2007)

- Pilot study - “post-occupational evaluation”, new mental health centre, Newham, London
- PFI (Private Finance Initiative) development
 - Private contract, leased by NHS, contractor manages the facility
- Study considers therapeutic design & environmental psychology
- Focus groups & unstructured interviews
 - Explore views service users & staff